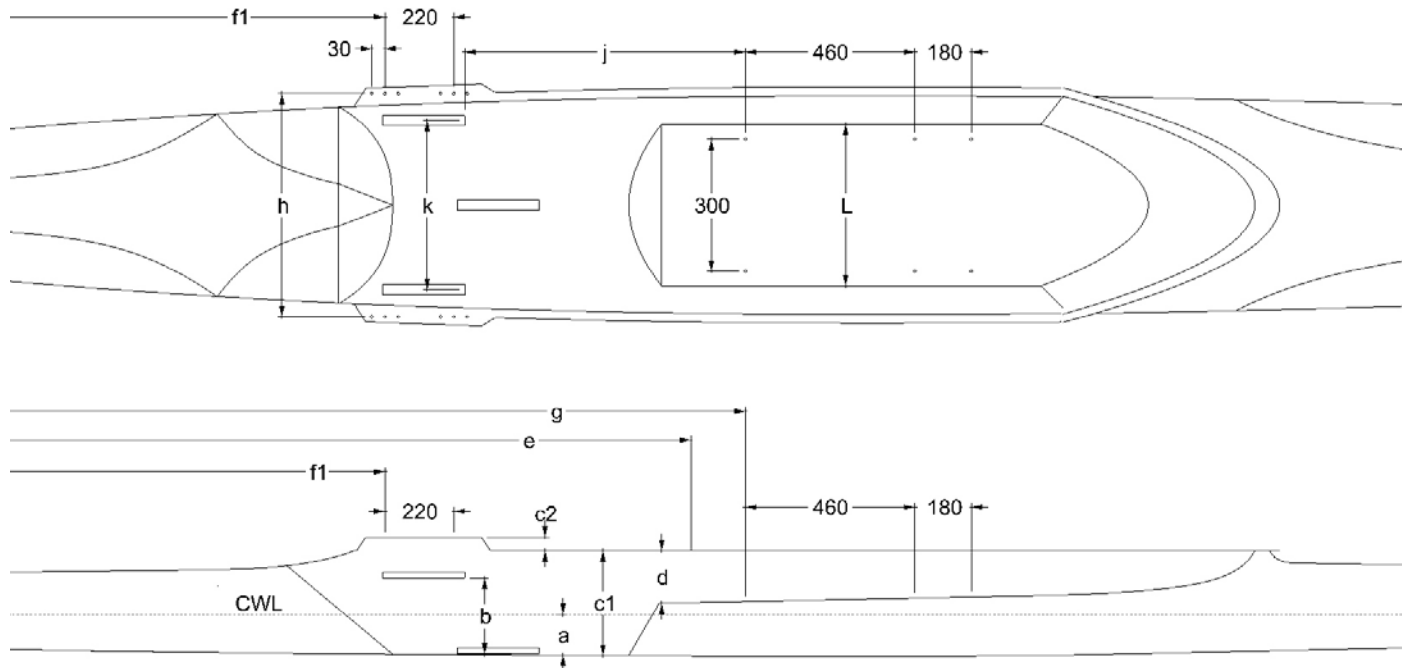


# Specifications on FISA Standard Adaptive Boats



**Adaptive specifications** All measures in mm

		A 1x	A 1x HW	TA 2x	LTA 4+	LTA 4+ SLW
Average Kg		75	90	75	75	60
a	<b>Crew water line - Lowest Point of Hull</b>	80	95	88	150	150
b	<b>Bottom Stretcher Track - Top Track</b>	140	140	130	130	130
c 1	<b>Saxboard - Lowest Point of Hull</b>	243	253	265	340	333
c 2	<b>Saxboard - Wing Flange</b>	20	20	0	0	0
d	<b>Saxboard - Deck</b>	107	107	115	135	135
e	<b>Stern tip to Rigger Pin</b>	2760	2760	3475	4210	4100
f 1	<b>Wing hole from stern</b>	2110	2110	2825	3560	3440
h	<b>Bow</b> <b>Width rigger bolts across boat</b> (Length rigger bolt spacing 220mm) (Boat flange has optional rigger holes 30mm fore or aft) <b>Stern</b>			555	520	500
2					540	500
3					540	500
			510	510	555	520
g	<b>Stern tip to stern seat track bolt</b> (Stern bolt – Mid bolt 460mm) (Mid bolt – to bow bolt 180mm) Width of seat tracks 300 mm	2890	2890	3580		
j	<b>Stern seat track bolt – Bow end of foot stretcher track</b> (Track is 250 mm long) (Track in single can be moved 130 to stern)	500	500	470		
k	<b>Width of stretcher tracks</b>	345	345	345	310	310
L	<b>Width of Seat Deck</b>	425	425	400-410		

Note: Length measures relate to stroke station, add for each station to bow for the following distance

- TA 2x 1400
- LTA 4+ 1400
- LTA 4+ LW 1250

+/- 1 kg change of the crew average weight changes the depth of the CWL +/- 1mm approx.